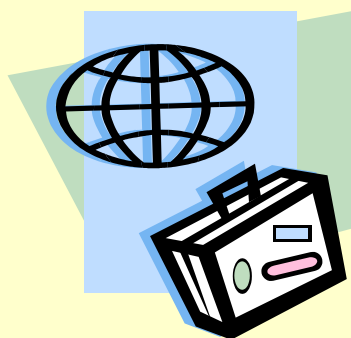




What Travel Writers Say Newsletter

www.whattravelwriterssay.com

Outward Bound: Mike Keenan



We are well into World Series baseball playoffs, the leaves falling readily into pools of colour, signaling a need to check our homes for insulation against the soon-to-arrive bitter drafts of cold air, and this week, we finish off with the Stratford Shakespeare Festival with attendance at two of our favourite plays: Colm Feore in *Macbeth* and Brian Bedford in *The Importance of Being Ernest*. It doesn't get much better.

Earlier in the season, we watched Bedford in his tribute to Oscar Wilde at the Tom Patterson Theatre. Midway through the one-man recital, someone's cell-phone rang loudly, and the crowd shuddered. Bedford paused, looked momentarily aside and carried on without further interruption, a true professional.

We visited Arlington, Alexandria, Mount Vernon and Washington on a

Please see *Outward Bound* on page 2

No amount of travel on the wrong road will bring you to the right destination.

Ben Gave

Focus: Must-See Arlington 'Hoods

Although Arlington has 11 Metro-centered neighborhoods, the six below are particularly popular among visitors:

Crystal City: Bright and vibrant, Crystal City features an abundance of fine restaurants, cafes, specialty stores, outdoor movie nights, bike trails and more. Many of Arlington's largest hotels are in Crystal City, connected via the Crystal City Underground to Metro. Adjacent to Ronald Reagan Washington National Airport and minutes from D.C.

Rosslyn: is located along the Potomac River and boasts monumental views of Washington, D.C. Always a destination for tourists, Rosslyn proudly welcomes visitors to the Marine Corps War Memorial (Iwo Jima), Arlington National Cemetery and Arlington House, the Robert E. Lee Memorial. A wide variety of hotel and dining options near Metro make Rosslyn an easy choice.

Please see on page 3

Featured Tip

Worried about deep-vein thrombosis on long plane flights? For the latest information, check: <http://www.whattravelwriterssay.com/tipsthrombosis.html>
Also for your consideration, do you wish to:

Space: the final frontier. These are the voyages of the Starship, Enterprise, its 5 year mission to explore strange new worlds, to seek out new life and new civilizations, to boldly go where no man has gone before.

Captain James Kirk

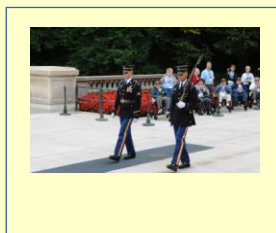
- Engage in horseback riding tourism?
- Learn worldwide holidays or celebrations?
- Go house-boating?
- Exchange homes?
- House sit?
- Find how far it is to somewhere?
- Take a farm holiday?
- Know the homicide rate per country?
- Find a hot-springs?
- Check the HIV/AIDS rate per country?
- Locate a hospital?
- Learn how to bid on travel?
- Check the size of an island?
- Visit a Hall of Fame?
- Go Hostelling?
- Calculate jet lag?
- Hike the Bruce Trail or the Appalachians?
- Access insurance?

Please see *Featured Tip* on page 4

Outward Bound from page 1

September pilgrimage to Virginia & DC. Like most people my age, I remember precisely where I was (on campus, sipping coffee in the UWO cafeteria) the moment John Fitzgerald Kennedy was assassinated in Dallas, Texas. Many decades later, I visit his gravesite in Arlington National Cemetery. With bus-loads of tourists and veterans; the mood is somber as befits a cemetery, little talk exchanged throughout the tour. The three Kennedy brothers, John, Robert and now Ted are all interred here.

Shortly before his death, JFK stood at the hillside location overlooking the cemetery toward the Lincoln Memorial and ironically commented, "I could stay here forever." His gravesite marker (John Fitzgerald Kennedy 1917-1963) is accented by an eternal flame requested by his wife.



Changing of the guard at Arlington Cemetery

Travel website of the month: The Stratford Shakespeare Festival

The Stratford Shakespeare Festival – <http://www.stratfordfestival.ca/> site is a valuable resource for both industry and traveler.

Stratford



Pictures (left to right): Brian Bedford, *The Importance of Being Ernest*, Colm Feore, *Macbeth*, Sean Cullen, *A Funny Thing Happened on the Way to the Forum*, Seana McKenna, *Phedre*.



Arlington Cemetery 25 graves dug each day

Focus on Arlington ‘Hoods cont’d.

Clarendon: If you’re searching for the quintessential Arlington experience, you’ll find it in Clarendon. The heart of Arlington’s original urban village, Clarendon and Wilson Boulevards, were recently named Best Streets in America by the American Planning Association. Blending nationally-known retailers with funky, one-of-a-kind boutiques and well-known favorite restaurants with “only-in-Arlington” eateries, Clarendon hums with activity morning, noon and night.

Shirlington: the place to go for dinner and a show. Arlington’s Signature Theatre anchors Shirlington’s European-style promenade with fun shops, restaurants, nightlife and arthouse cinema.

Ballston: The Ballston Metro station is centrally located, one block from Ballston Common Mall and within easy walking distance from hotels and dining. If you’re staying in Ballston, plan to ice skate or spectate – the Kettler Capitals Iceplex is located atop the Ballston Common Mall parking garage, and is home to the NHL’s Washington Capitals.

Pentagon City: The Fashion Centre at Pentagon City and the Pentagon Row shopping and entertainment complex offer a complete shopping experience, whether you’re a designer-clad fashionista or an avant-garde trendsetter.

I never travel without my diary. One should always have something sensational to read in the train.

Oscar Wilde

Featured Tip from page 2

Well, that's just the "H-J" list of travel tips located on the 'Net at www.whattravelwriterssay.com where there are 400 more links to every conceivable travel related question that you might have. Be sure to bookmark the site to assist you in the future.

If you have additional travel tips that you would like to share with others, please send them to us for inclusion on our site.



Iowa Jima Memorial

Industry News

For the latest travel industry news, visit: <http://www.whattravelwriterssay.com/indexnews.html>

In Arlington we stayed at the Crystal Gateway Marriott, 1700 Jefferson Davis Hwy., 703-920-3230 (Thom Puccio, Director of Sales), the Marriott Key Bridge, 1401 Lee Hwy. 703-524-6400 (Dionne Travis, Executive Assistant to the General Manager), and the Hotel Palomar, 1121 N. 19th Street 703-351-9170 (Ben Timashenka, General Manager). All three are beautiful properties with easy access to Washington via the Metro.

The Metro is a terrific system for getting around Washington and Arlington. It employs subdued lighting which seems to calm everyone even when encountering ten thousand people attending the National Book Fair at the Mall and all getting on and off at the Smithsonian.

I recommend the Tourmobile tour of Arlington Cemetery: www.tourmobile.com/tours_arlington.php The walking is easy, but it's a large cemetery and getting larger with an average of 25 burials per day!

What Travel Writers Say

64 Confederation Dr.
Niagara on the Lake ON
L0S 1J0

E-mail:
whattravelwriterssay@cogeco.net

Unfortunately, they are not doing any tours at all of the Pentagon since 09/11. You need a special letter from the Canadian Embassy & then it has to be passed/approved through a local Congressman in the US. Instead, visit the 09/11 "Memorial" at the Pentagon which is open to the public.

See www.whs.mil/memorial/ and www.pentagonmemorial.net/home.aspx

I met Merrie Morris from the Alexandria CVB, 221 King Street, Alexandria, 703.746.3306 who advised that there is a major Dan Brown attraction in Alexandria, the George Washington Masonic Memorial.

The Mount Vernon Estate was an informative visit, George Washington's family home, located along the shores of the Potomac River. Mount Vernon is 16 miles south of Washington, D.C. and 8 miles south of Old Town Alexandria at the southern terminus of the George Washington Memorial Parkway. Parking is free and convenient.

Address: 3200 Mount Vernon Memorial Highway, Mount Vernon, Virginia 22309, See: www.mountvernon.org/ Contact: Emily Coleman Dibella, Associate Director of Mount Vernon for Marketing Historic Mount Vernon, PO Box 110, Mount Vernon, VA 22121, 703-799-8607 (direct)

Visit.MountVernon.org