

World Quiz G

Try our World Quiz & see how well you know our planet. Answers appear at the bottom.

1. What U.S. state is the Bay State?

- A) California
- B) Washington
- C) Louisiana
- D) Massachusetts



2. What city is at the east end of Lake Erie?

- A) Buffalo
- B) Erie
- C) Rochester
- D) Cleveland



3. In what country is Kabul?

- A) Pakistan
- B) Iraq
- C) Afghanistan
- D) Iran



4. From the air, huge geometric figures can be seen here.

- A) Auckland, New Zealand
- B) Lascaux, France
- C) Nazca, Peru
- D) Winnipeg, Canada



5. In which country are you likely to find Gauchos?

- A) Argentina
- B) Mexico
- C) Chile
- D) Spain



6. In which state is Mount Vernon?

- A) Maine
- B) New York
- C) Washington
- D) Virginia



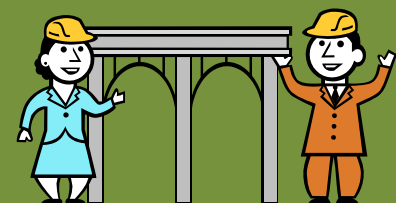
7. On what river is Victoria Falls?

- A) Niagara
- B) Zambezi
- C) Ganges
- D) Indus



8. In which city is the Bridge of Sighs?

- A) Venice
- B) Rome
- C) Paris
- D) Madrid



9. What canal connects Lakes Erie and Ontario?

- A) Rideau
- B) Lachine
- C) Welland
- D) Seton



10. In which country are the pampas?

- A) Cambodia
- B) Viet Nam
- C) Australia
- D) Argentina



11. What is the largest lake in Australia?

- A) Eyre
- B) St. Clair
- C) McKenzie
- D) Argyle



12. What is the capital of Virginia?

- A) Richmond
- B) Roanoke
- C) Alexandria
- D) Norfolk



13. Grenada is the most southerly of what group of islands?

- A) Luzon
- B) Aleutians
- C) Channel
- D) Windward



14. This large island is just south of Corsica?

- A) Catalina
- B) Sardinia
- C) Rhodes
- D) Crete



15. Amman is the capital of what country?

- A) Iran
- B) Sudan
- C) Jordan
- D) Morocco



16. What is the capital of Peru?

- A) Lima
- B) Cusco
- C) Arequipa
- D) Pisco



17. Who controls Bethlehem?

- A) Israel
- B) Palestine
- C) United Nations
- D) Jordan



18. What is the world's largest inland sea?

- A) Lake Superior
- B) Caspian Sea
- C) Lake Victoria
- D) Lake Huron



19. What is the capital of Cyprus?

- A) Kourian
- B) Nicosia
- C) Kyrenia
- D) Famagusta



20. In what city is Gorki Park?

- A) Copenhagen
- B) New York
- C) Moscow
- D) Tokyo



Answers

1. D, 2.A, 3.C, 4.C, 5.A, 6.D, 7.B, 8.A, 9.C, 10.D, 11.A, 12.A, 13.D, 14.B, 15.C, 16.A, 17.B, 18.B, 19.B, 20.C

Ratings

20/20: A true citizen of the world. Congratulations; Spock is proud of you.

15-19: Not too shabby; you could reside anywhere and seem like a native.

10-14: Probably the water questions, right?

>10: Best purchase a compass & GPS.

